
Live2D Cubism Core

API Reference

Version r11
Last Update 2023/03/10

Changelog

Update day	Version	Update Type	Content
2018/06/14	r2	translation	translation to English from Japanese
2018/07/20	r3	Corrected	Corrected errors of snippet Corrected vague expression Corrected omissions of letter in snippet Added more detailed explanation about rendering method of mask and how to access it Corrected mistake that const is included in notation of arguments.
2019/02/26	r5	Added	Added "File version of moc3" Added "Getting the parent parts of the parts" Added the API description of csmGetLatestMocVersion Added the API description of csmGetMocVersion Added the API description of csmGetPartParentPartIndices
2019/08/01	r6	Added	Added a constant stands for moc3 file version Added a snippet since the ConstantFlag element has added Added a description of the Inverted Mask flag Added a description of the Inverted Mask function Added an item stands for the available version of each API
		Fixed	Typo fixes
2019/09/04	r7	Fixed	Adjusted notation of "Cubism Core" and "Cubism SDK"
2021/03/01	r8	Fixed	Added an explanation for the existence of Drawables with a count of 0 in csmGetDrawableIndexCounts.
		Fixed	Added explanation of the case where csmGetDrawableIndices does not store valid addresses.
2022/05/19	r9	Added	Added explanations of the function to obtain parameter keys.
		Added	Added explanations of the multiply color and the screen colors.

2022/07/07	r10	Added	Added description of the function to get parameter types.
		Added	Added description of the function to get parent parts of ArtMeshes.
		Added	Updated obtained versions in " File version of moc3 " and " csmGetMocVersion ".
2022/03/10	r11	Added	Added description of the function to validate MOC3.

※ Highlighted sentences mean the latest modification and addition.

Contents

Overall

Regarding this document

Functional classification of Core and Framework

• What is Core?

How to render a model.

• Data for rendering provided by Core

• Cycles of Rendering and behavior of the Core

How to use the API for each scene

How to obtain the information related to the Core.

• How to obtain the version information of the Core.

• Output log of the Core.

Loading files

• How to load a Moc3 file and to expand up to the csmModel object

• Check moc3 consistency

• File version of moc3

• Release csmMoc or csmModel

• Get rendering size of model

• Loading and placement Drawable

• Gets the parent parts of Drawable

Manipulate the model

• Acquiring each element of the parameter

• Gets the parent parts of parts

• Operating parameters

• Operating parts opacity.

• Applying the operation to the model.

• Reset of DynamicFlag

Rendering

• Necessary processes for rendering

• Specification of rendering

Confirmation of Element with ConstantFlags

Formula for color composition

Culling direction and DrawableIndices

Specification of Clipping

• Confirmation of updated information

• Obtaining the updated vertex information

• Sorting drawing order of Drawable

• DrawOrder and RenderOrder

• Apply mask on rendering.

- [·Apply the multiply color and screen color to the shader](#)
- [·Getting the parameter keys](#)

Individual APIs

Naming rule for the APIs.

- [·SOA structure](#)
- [·InPlace](#)

[csmGetVersion](#)

[csmGetLatestMocVersion](#)

[csmGetMocVersion](#)

[csmGetLogFunction](#)

[csmSetLogFunction](#)

[csmReviveMocInPlace](#)

[csmGetSizeofModel](#)

[csmInitializeModelInPlace](#)

[csmUpdateModel](#)

[csmReadCanvasInfo](#)

[csmGetParameterCount](#)

[csmGetParameterIds](#)

[csmGetParameterTypes](#)

[csmGetParameterMinimumValues](#)

[csmGetParameterMaximumValues](#)

[csmGetParameterDefaultValues](#)

[csmGetParameterValues](#)

[csmGetParameterKeyCounts](#)

[csmGetParameterKeyValues](#)

[csmGetPartCount](#)

[csmGetPartIds](#)

[csmGetPartOpacities](#)

[csmGetPartParentPartIndices](#)

[csmGetDrawableCount](#)

[csmGetDrawableIds](#)

[csmGetDrawableConstantFlags](#)

[csmGetDrawableDynamicFlags](#)

[csmGetDrawableTextureIndices](#)

[csmGetDrawableDrawOrders](#)

[csmGetDrawableRenderOrders](#)

[csmGetDrawableOpacities](#)

[csmGetDrawableMaskCounts](#)

[csmGetDrawableMasks](#)

[csmGetDrawableVertexCounts](#)

[csmGetDrawableVertexPositions](#)

[csmGetDrawableVertexUvs](#)
[csmGetDrawableIndexCounts](#)
[csmGetDrawableIndices](#)
[csmResetDrawableDynamicFlags](#)
[csmGetDrawableMultipleColors](#)
[csmGetDrawableScreenColors](#)
[csmGetDrawableParentPartIndices](#)
[csmHasMocConsistency](#)

Overall

Regarding this document

In this document, you can learn functions of Live2D Cubism Core (Core) in Live2D Cubism SDK, how to use it and specification of its API

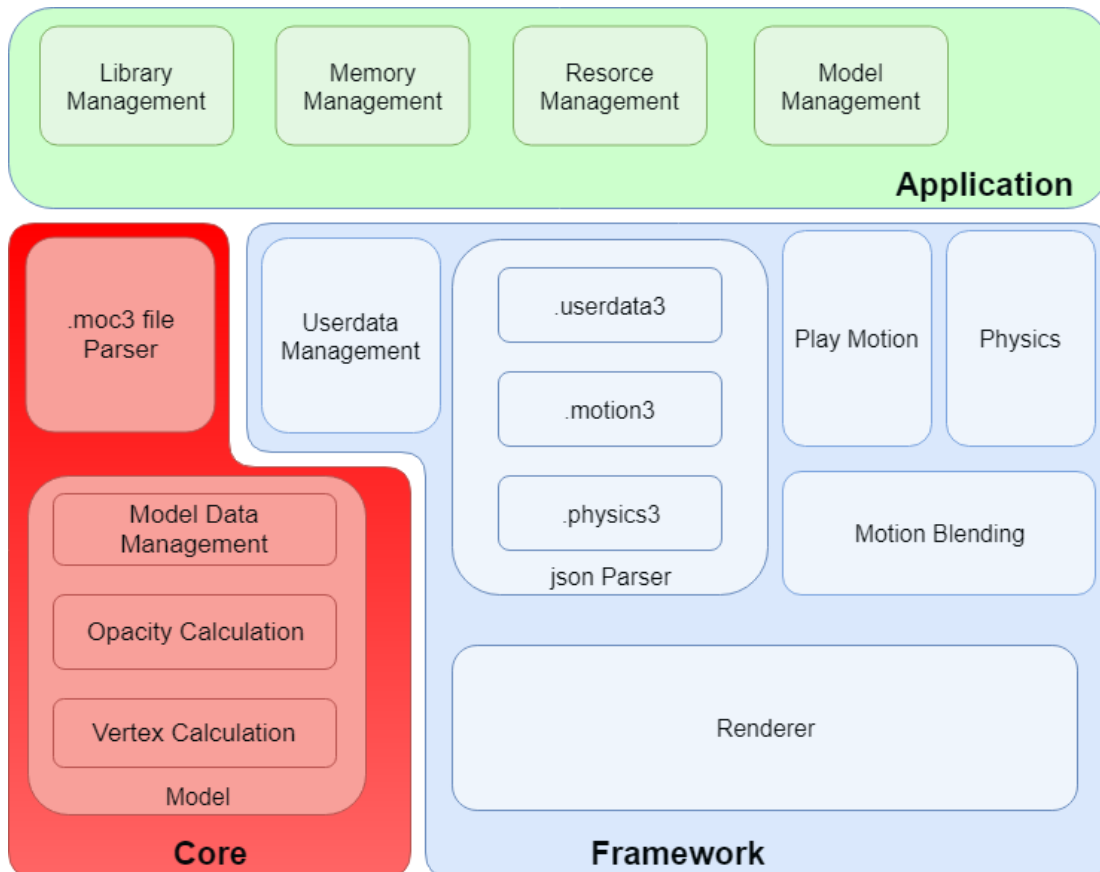
Target

- Users of Live2D Cubism SDK
- Those who are considering embedding wrapper to call Core from other languages such as Java and Python
- Those who are considering embedding into other programs or platform such as game engines.

Functional classification of Core and Framework

The following chart shows the relationship between the Application and Core and Framework, and their roles.

Core is called from both Application and Framework.



▪ What is Core?

Core is a library including API necessary for handling models (.moc3 file) created with Live2D Cubism Editor. Its features are explained in the following.

- The API is coded by C language.
- The Core doesn't keep and discard Memory. It is necessary to keep the specified amount of Memory on users' side and provide it to the Core for its request.
- The core doesn't equip rendering function. The role of the Core is to calculate vertex information according to the parameters of a model. Applications or programs obtain calculated vertex information and information necessary for rendering (UV, opacity etc) from Core. Also, it doesn't needed to implement the rendering function for the Core since Framework provides reference implementation.

Due to the features written above, the core has high portability. Also it is not dependent on platforms.

How to render a model.

Different from Live2D Cubism 2 SDK, rendering function was separated from the Core after Live2D Cubism 3 SDK.

The advantage of this change is that it is possible for developers to embed Cubism into various environments.

The rendering function is provided in Framework as a reference implementation for popular use cases. Even in an environment that the function has not been provided, it is possible to have the function by obtaining 3D primitives information such as vertex information with the API of the Core and the rendering APIs specified for environment.

▪ Data for rendering provided by Core

The data that Core provides about models is classified into three major categories: Parameter, Part, and Drawable.

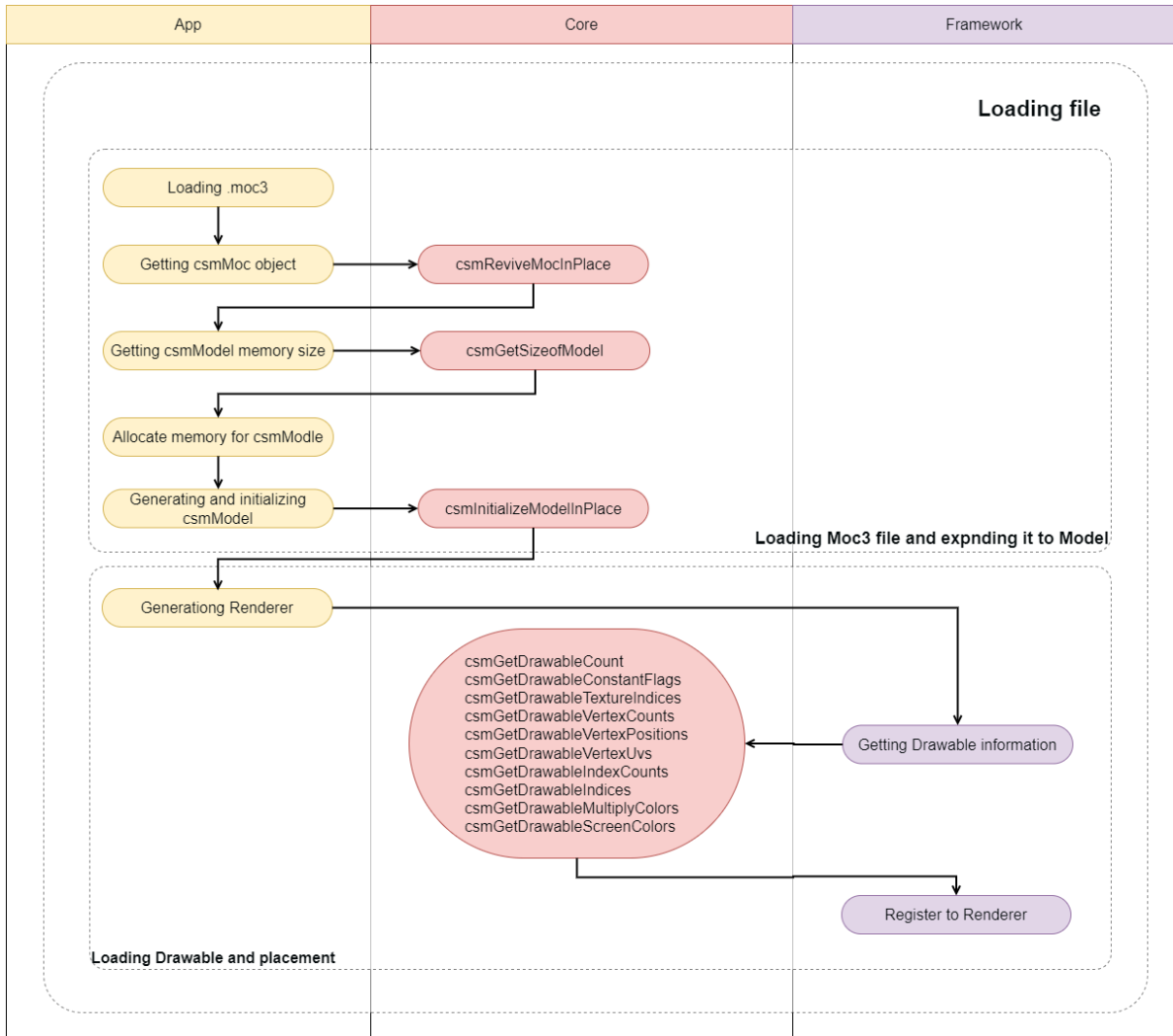
Among them, Drawable is a collection of data necessary for rendering.

Vertex information provided by Drawable is two-dimensional data which consists of X and Y. The starting point of coordinates for each element is bottom left. Also, the surface of the polygon is counter-clockwise.

The data is in accordance with the coordinate system of OpenGL.

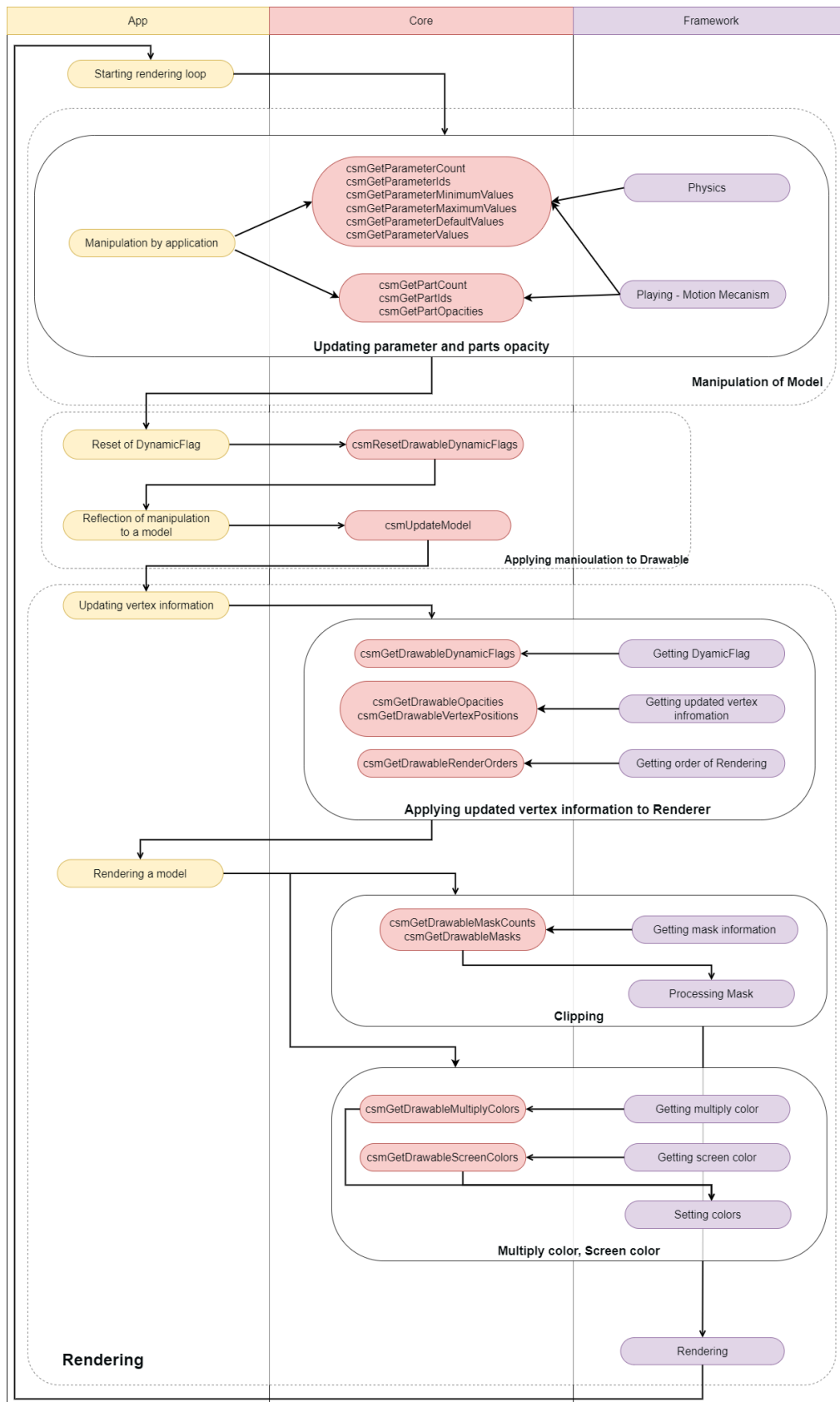
• Cycles of Rendering and behavior of the Core

The following chart shows the flow of processing for loading a model file (.moc3).



Yellow node shows Application, purple node means a segment Framework should process. Nodes with arrow to the Core indicate calls to API of the Core.

The following chart shows the refresh cycle of rendering.



Same as the first chart, yellow node shows Application, purple node means a segment Framework should process. Nodes with arrow to the Core indicate calls to API of the Core. The sections surrounded by solid lines are simplified explanation .

How to use the API for each scene

How to obtain the information related to the Core.

- How to obtain the version information of the Core.

Version information of the Core currently used can be obtained

```
snippet:  
    csmVersion version = csmGetVersion();
```

Version notation consists of three parts: MAJOR, MINOR, and PATCH.
Operation rule for each part is shown below.

Major version (1 byte)

It is incremented when backward compatibility is lost with model data due to some reason such as major version up of Cubism Editor.

Minor version (1 byte)

It is incremented when function was added with backward compatibility kept.

Patch number (2 byte)

It is incremented when the defect is fixed. If the major version or minor version is changed, the patch number is reset to 0.

```
0x  00  00  0000  
    Major Minor Patch
```

The version consists of 4 bytes. By treating it as an unsigned integer, the new Core version always means a larger number.

Link to the used API

[csmGetVersion](#)

▪ Output log of the Core.

In order to output the log of the Core, the function to output log can be preset. For example, if an error occurs when using the Core API, a log gets output through the preset function.

The function to output log that can be preset is the following.

```
snippet:
/** Log handler.
 *
 * @param message Null-terminated string message to log.
 */
typedef void (*csmLogFunction)(const char* message);
```

Example:

```
snippet:
void logPrint(const char* message)
{
    printf("[LOG] %s", message);
}

// Set Cubism log handler.
csmSetLogFunction(logPrint);
```

Link to the used API

[csmSetLogFunction](#)
[csmGetLogFunction](#)

Loading files

▪ How to load a Moc3 file and to expand up to the csmModel object

Model information is stored in moc3. It needs to be expanded up to csmModel object to be handled in Core .

After expanding it to csmModel, API needs to be operated with csmModel as the key.

Memory area to generate object of csmMoc and csmModel needs to have address aligned by specified size.

Alignment size is written in the include.

Loading moc3

```
snippet:
/** Alignment size definition */
enum
{
    /** Necessary alignment for mocs (in bytes). */
    csmAlignofMoc = 64,
    /** Necessary alignment for models (in bytes). */
    csmAlignofModel = 16
};

void* mocMemory;
unsigned int mocSize;

// Load file to memory address aligned as 64byte.
// The file size of .moc3 is stored in mocSize.
mocMemory = ReadBlobAligned("Koharu/Koharu.moc3", csmAlignofMoc, &mocSize);

csmMoc* moc = csmReviveMocInPlace(mocMemory, mocSize);
```

Create a model from moc 3:

```
snippet:
unsigned int modelSize = csmGetSizeofModel(moc);

// The model needs to be aligned as 16 bytes
void** modelMemory = AllocateAligned(modelSize, csmAlignofModel);

// Create an instance of the model
csmModel* model = csmInitializeModelInPlace(moc, modelMemory, modelSize);
```

▪ Check moc3 consistency

Using `csMHasMocConsistency`, you can check the consistency of the `.moc3` file to be loaded to ensure that it is not malformed.

If the consistency of the `.moc3` file cannot be verified, return 0.

If an unspecified `.moc3` file is expected to be loaded, it is recommended to check its consistency before creating the `csMoc` object with `csMInitializeModelInPlace`.

However, please note that checking consistency may affect performance.

```
snippet:
void* mocMemory;
unsigned int mocSize;

// Load file to memory address aligned as 64byte.
// The file size of .moc3 is stored in mocSize.
mocMemory = ReadBlobAligned("Koharu/Koharu.moc3", csMAlignofMoc, &mocSize);

// Check moc3 consistency.
int consistency = csMHasMocConsistency(mocMemory, mocSize);

if(!consistency)
{
    // Do not process if consistency cannot be verified.
    return;
}

// Create an instance of the model
csMModel* model = csMInitializeModelInPlace(moc, modelMemory, modelSize);
```

Link to the used API

[csMHasMocConsistency](#)

▪ File version of moc3

moc3 file format had a version up. New moc3 file may not be read in the old Core. Core has the compatibility to the moc3 file of the following corresponding version. csmGetLatestMocVersion shows the latest file version that Core can process.

```

/** moc3 file format version. */
enum
{
    /** unknown */
    csmMocVersion_Unknown = 0,
    /** moc3 file version 3.0.00 - 3.2.07 */
    csmMocVersion_30 = 1,
    /** moc3 file version 3.3.00 - 3.3.03 */
    csmMocVersion_33 = 2,
    /** moc3 file version 4.0.00 - 4.1.05 */
    csmMocVersion_40 = 3,
    /** moc3 file version 4.2.00 - */
    csmMocVersion_42 = 4
};

/** moc3 version identifier. */
typedef unsigned int csmMocVersion;

/**
 * Gets Moc file supported latest version.
 *
 * @return csmMocVersion (Moc file latest format version).
 */
csmApi csmMocVersion csmGetLatestMocVersion();

/**
 * Gets Moc file format version.
 *
 * @param address Address of moc.
 * @param size Size of moc (in bytes).
 *
 * @return csmMocVersion
 */
csmApi csmMocVersion csmGetMocVersion(const void* address, const unsigned int size);

```

csmGetMocVersion shows the file version of moc3.

If it is not moc3 file, it returns csmMocVersion_Unknown = 0.

The execution order of csmGetMocVersion is not tied to the timing of the csmReviveMocInPlace.

To check whether the fire can be loaded by comparing the got file version and Core version.

To expand to the model while examining the file version of moc3.

snippet:

```
void* mocMemory;
unsigned int mocSize;

// Load file to memory address alined as 64byte.
// The file size of .moc3 is stored in mocSize.
mocMemory = ReadBlobAligned("Koharu/Koharu.moc3", csmAlignofMoc, &mocSize);

const csmMocVersion fileVersion = csmGetMocVersion(mocMemory, mocSize);

if( ( csmGetLatestMocVersion() < fileVersion ) ||
    ( fileVersion == 0 ) )
{
    Log("can't load moc3 file");
    return;
}

csmMoc* moc = csmReviveMocInPlace(mocMemory, mocSize);

unsigned int modelSize = csmGetSizeofModel(moc);

// The model needs to be aligned as 16 bytes
void** modelMemory = AllocateAligned(modelSize, csmAlignofModel);

// Create an instance of the model
csmModel* model = csmInitializeModelInPlace(moc, modelMemory, modelSize);
```

If you attempt to load the new files with older versions of the Core, the return value of `csmReviveMocInPlace` will be NULL.

If the Core version from `csmGetVersion()` is 03.03.0000(50528256) or later, the message below will be output to the Core logs.

```
csmReviveMocInPlace is failed. The Core unsupport later than moc3 ver:2. This moc3 ver is 3.
```

Please do use the latest Core.

▪ Release csmMoc or csmModel

csmReviveMocInPlace, csmInitializeModelInPlace needs to be operated only within the input memory space.

The returned address is always the one in the prepared memory area.

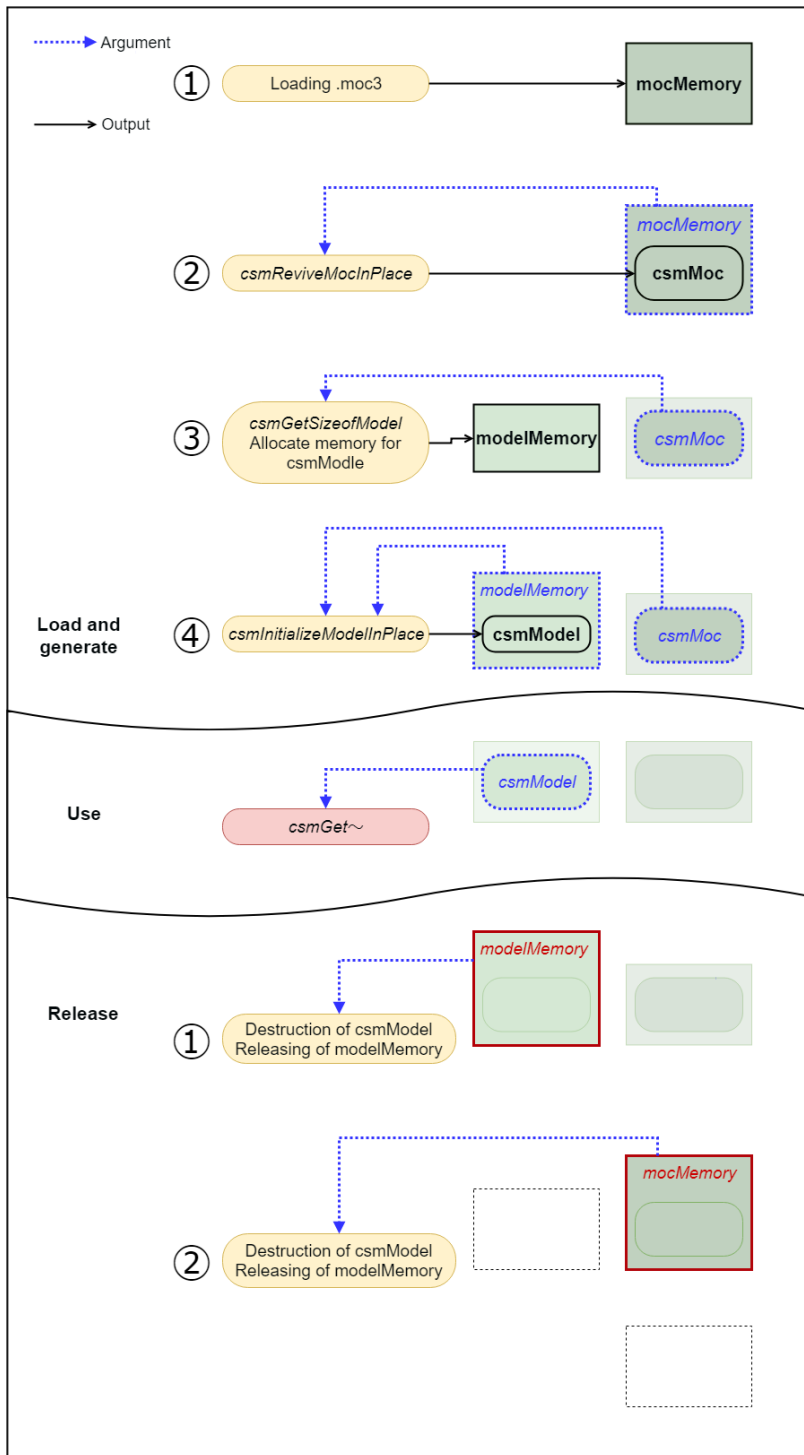
csmMoc and csmModel exist in the memory area used for input in csmReviveMocInPlace, csmInitializeModelInPlace. Accordingly the input memory area needs to be kept.

Also, csmMoc needs to be kept until all corresponding csmModels gets discarded.

This is because csmModel refers to csmMoc.

Release memory targeting not addresses of csmMoc or csmModel but its of mocMemory or modelMemory when csmMoc and csmModel. needs to be discarded.

The following chart shows the flow about securing and releasing memory.



Link to the used API

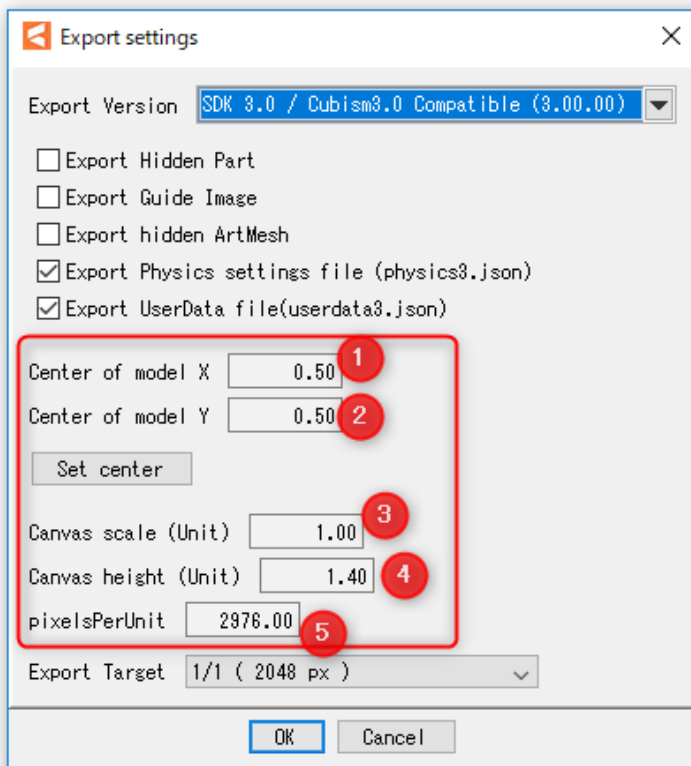
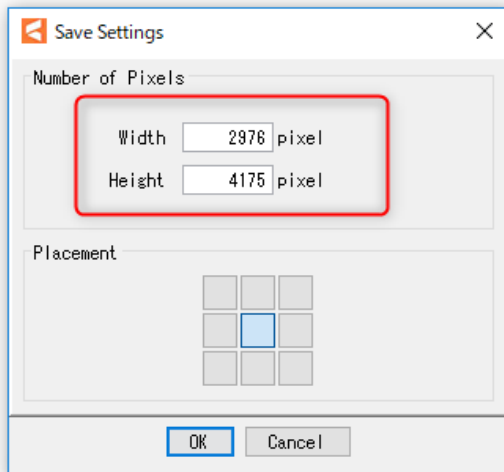
[csmReviveMocInPlace](#)

[csmGetSizeofModel](#)

[csmInitializeModelInPlace](#)

• Get rendering size of model

canvas size displayed as work area in Editor, center position and unit position that can be specified when model file is exported can be obtained.



Access to canvas information of model.

```
snippet:  
csmVector2 size;  
csmVector2 origin;  
float pixelsPerUnit;  
  
csmReadCanvasInfo(Sample.Model, &size, &origin, &pixelsPerUnit);  
  
printf("size.X=%5.1f",size.X); // size.X = 2400.0 = (3) * (5)  
printf("size.Y=%5.1f",size.Y); // size.Y = 3000.0 = (4) * (5)  
printf("origin.X=%5.1f",origin.X); // origin.X = 1200.0 = (1) * (5)  
printf("origin.Y=%5.1f",origin.Y); // origin.Y = 1500.0 = (2) * (5)  
printf("pixelsPerUnit=%5.1f",pixelsPerUnit); // pixelsPerUnit = 2400.0 =(5)
```

Link to the used API

[csmReadCanvasInfo](#)

▪ Loading and placement Drawable

Drawable means an unit of drawing in the Core.

Drawable corresponds to an art mesh on the Editor.

Drawable has the necessary information to draw.

There are static information that does not change and dynamic information that changes by changing the value of the parameter in a data loaded from moc3. Static information can be cached in the application side.

The group having `csmGet [XXXX] Count` is structure of array (SOA). The number of arrays can be obtained by Count.

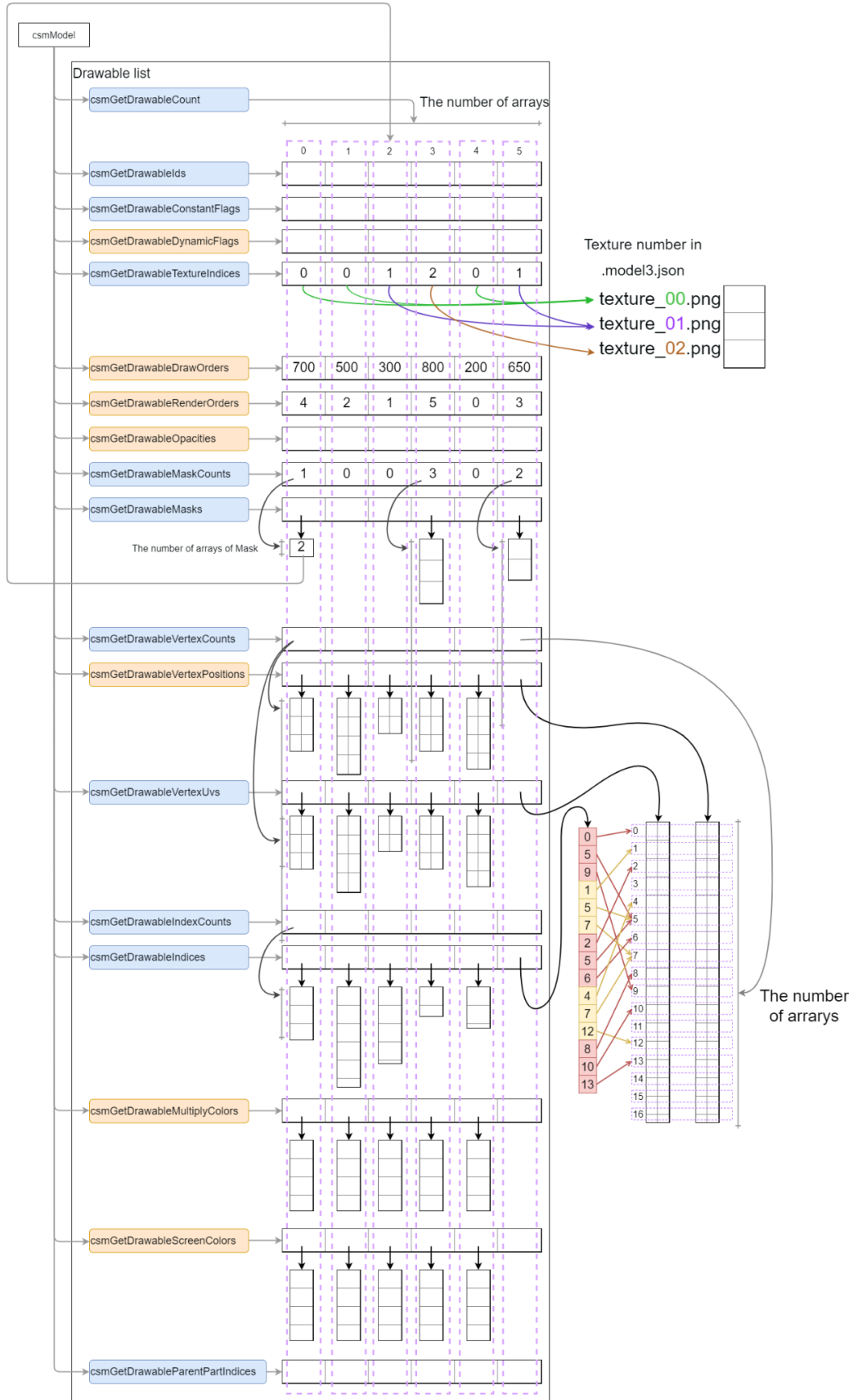
An array obtained with an API such as `csmGetDrawableTextureIndices` is the starting address of the array.

Arrays in each API have the same sequences. When it is necessary to look for a particular parameter, the parameter needs to be searched in the array obtained by `csmGetDrawableIds`.

Parameters, parts, etc are described the same manner.

The following chart shows the structure of the Drawable list.

When `csmUpdateModel` is executed, The blue API shows a static item. Also the Orange API shows a dynamic item.



In loading Drawable, preparation for attribute of the render such as registration to the graphics API or generation structure for drawing order sorting will be getting done.

Conversion from Drawable SOA to AOS structure

```

snippet:
// Initialization
drawableCount= csmGetDrawableCount(model);
drawables      = Allocate(sizeof(Drawable) * drawableCount);

textureIndices = csmGetDrawableTextureIndices(model);
constantFlags  = csmGetDrawableConstantFlags(model);

vertexCounts   = csmGetDrawableVertexCounts(model);
vertexPositons = csmGetDrawableVertexPositions(model);
vertexUvs      = csmGetDrawableVertexUvs(model);

indexCounts    = csmGetDrawableIndexCounts(model);
vertexIndices  = csmGetDrawableIndices(model);

ids            = csmGetDrawableIds(model);
opacities      = csmGetDrawableOpacities(model);
drawOrders     = csmGetDrawableDrawOrders(model);
renderOrders   = csmGetDrawableRenderOrders(model);
dynamicFlags   = csmGetDrawableDynamicFlags(model);

maskCounts     = csmGetDrawableMaskCounts(model);
masks          = csmGetDrawableMasks(model);

// Initialize static drawable fields.
for (d = 0; d < drawableCount; ++d)
{
    drawables[d].TextureIndex    = textureIndices[d];

    if ((constantFlags[d] & csmBlendAdditive) == csmBlendAdditive)
    {
        drawables[d].BlendMode = csmAdditiveBlending;
    }
    else if ((constantFlags[d] & csmBlendMultiplicative) == csmBlendMultiplicative)
    {
        drawables[d].BlendMode = csmMultiplicativeBlending;
    }
    else
    {
        drawables[d].BlendMode = csmNormalBlending;
    }

    drawables[d].IsDoubleSided    =
        (constantFlags[d] & csmlsDoubleSided) == csmlsDoubleSided;
    drawables[d].IsInvertedMask   =
        (constantFlags[d] & csmlsInvertedMask) == csmlsInvertedMask;
    drawables[d].VertexCount      = vertexCounts[d];
    drawables[d].VertexPositions  = Allocate(sizeof(Vector3) * vertexCounts[d]);
}

```

```

drawables[d].VertexUvs = Allocate(sizeof(Vector2) * vertexCounts[d]);

// Both VertexPositions and VertexUvs show informatin two-dimension.
// vertexCounts shows the number of vertices, different from indices.
for (i = 0; i < vertexCounts[d]; ++i)
{
    drawables[d].VertexPositions[i].x = vertexPositons[d][i].X;
    drawables[d].VertexPositions[i].y = vertexPositons[d][i].Y;
    // Note that there is no Vertex Position but x and y
    drawables[d].VertexPositions[i].z = 0;

    drawables[d].VertexUvs[i].x = vertexUvs[d][i].X;
    drawables[d].VertexUvs[i].y = vertexUvs[d][i].Y;
}

// vertexIndices [d] are all triangular notation indexCounts [d] always gets a multiple number of 3.
drawables[d].IndexCount      = indexCounts[d];
drawables[d].Indices        = vertexIndices[d]; // Got as a single array

// Register values such as VertexPositions, VertexUvs, vertexIndices, etc. in the graphics API
drawables[d].Mesh = MakeMesh(drawables[d].VertexCount,
                             drawables[d].VertexPositions,
                             drawables[d].VertexUvs,
                             drawables[d].IndexCount,
                             drawables[d].Indices);

// Access to other Drawable elements
drawables[d].ID          = ids[d];
drawables[d].DrawOrder   = drawOrders[d];

// The following three items are important on rendering.
drawables[d].Opacity     = opacities[d];
drawables[d].RenderOrder = renderOrders[d];
drawables[d].DynamicFlag = dynamicFlags[d];

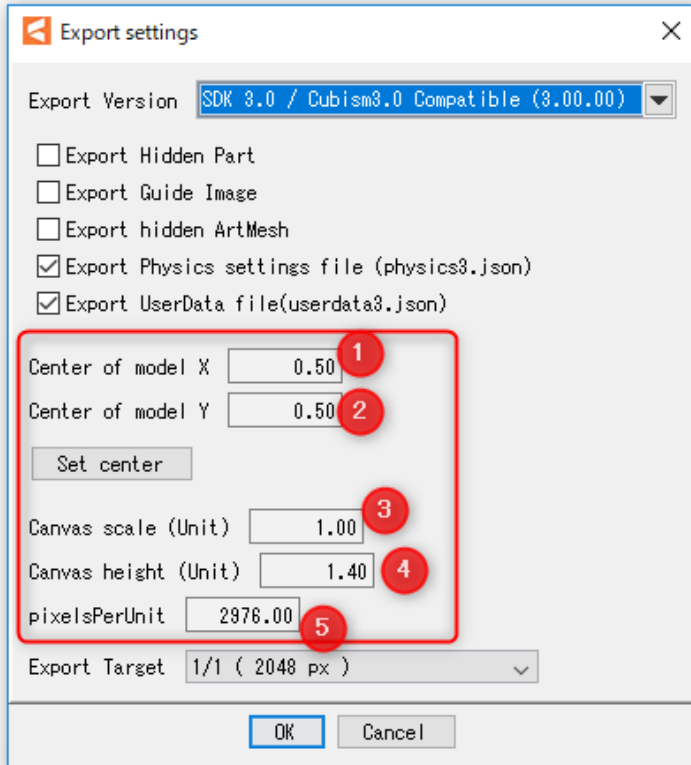
drawables[d].MaskCount = maskCounts[d];
drawables[d].Masks     = Allocate(sizeof(int) * maskCounts[d]);
for (m = 0; m < maskCounts[d]; ++m)
{
    drawables[d].Masks[m] = masks[d][m];

    // Numbers in masks are index of Drawable
    drawables[d].MaskLinks = &drawables[(masks[d][m])];
}
}

```


Vertex X,Y obtained by `esmGetDrawableVertexPositions` influenced `PixelsPerUnit` of canvas setting on export from Cubism Editor for embedding.

The value of X and Y are shown as a unit. The value can be calculated by the following formula.



$$X = (localX / [5]) - ([1] * [3])$$

$$Y = ([2] * [4]) - (localY / [5])$$

Vertex information whose aspect ratio has been kept is saved.

Even if the vertex is beyond the boundary It'll be saved as it is.

For more details, please refer to ["Area of DrawableVertexPotions"](#)

Link to the used API

[csmGetDrawableCount](#)

[csmGetDrawableIds](#)

[csmGetDrawableConstantFlags](#)

[csmGetDrawableDynamicFlags](#)

[csmGetDrawableTextureIndices](#)

[csmGetDrawableDrawOrders](#)

[csmGetDrawableRenderOrders](#)

[csmGetDrawableOpacities](#)

[csmGetDrawableMaskCounts](#)

[csmGetDrawableMasks](#)

[csmGetDrawableVertexCounts](#)

[csmGetDrawableVertexPositions](#)

[csmGetDrawableVertexUvs](#)

[csmGetDrawableIndexCounts](#)

[csmGetDrawableIndices](#)

▪ Gets the parent parts of Drawable

Parts are made of tree structure.

This tree structure is created by the operation of the editor.

csmModel even holds the information of the structure that is generated from moc3.

The results of csmGetDrawableParentPartIndices shows the parent of Drawables by index in array.

When the parent number indicates the -1, it indicates that the parent is the Root.

```
snippet:
// init
partIds =csmGetPartIds(model);
drawableCount = csmGetDrawableCount(model);
drawableParentPartIndices = csmGetDrawableParentPartIndices(model);
drawableIds = csmGetDrawableIds(model);

// If drawableParentIndex = -1, parent is empty.
// If drawableParentIndex >= 0, the value of parentPartIndices is the Index of the parent.
for (int i = 0; i < drawableCount; ++i)
{
    if(drawableParentPartIndices[i] == -1)
    {
        printf("drawableParentPartIndices[%d]:%s does not have a parent part.", i, drawableIds[i]);
    }
    else
    {
        printf("drawableParentPartIndices[%d]:Parent part of %s is %s.", i, drawableIds[i],
partIds[drawableParentPartIndices[i]]);
    }
}
}
```

Link to the used API

[csmGetDrawableParentPartIndices](#)

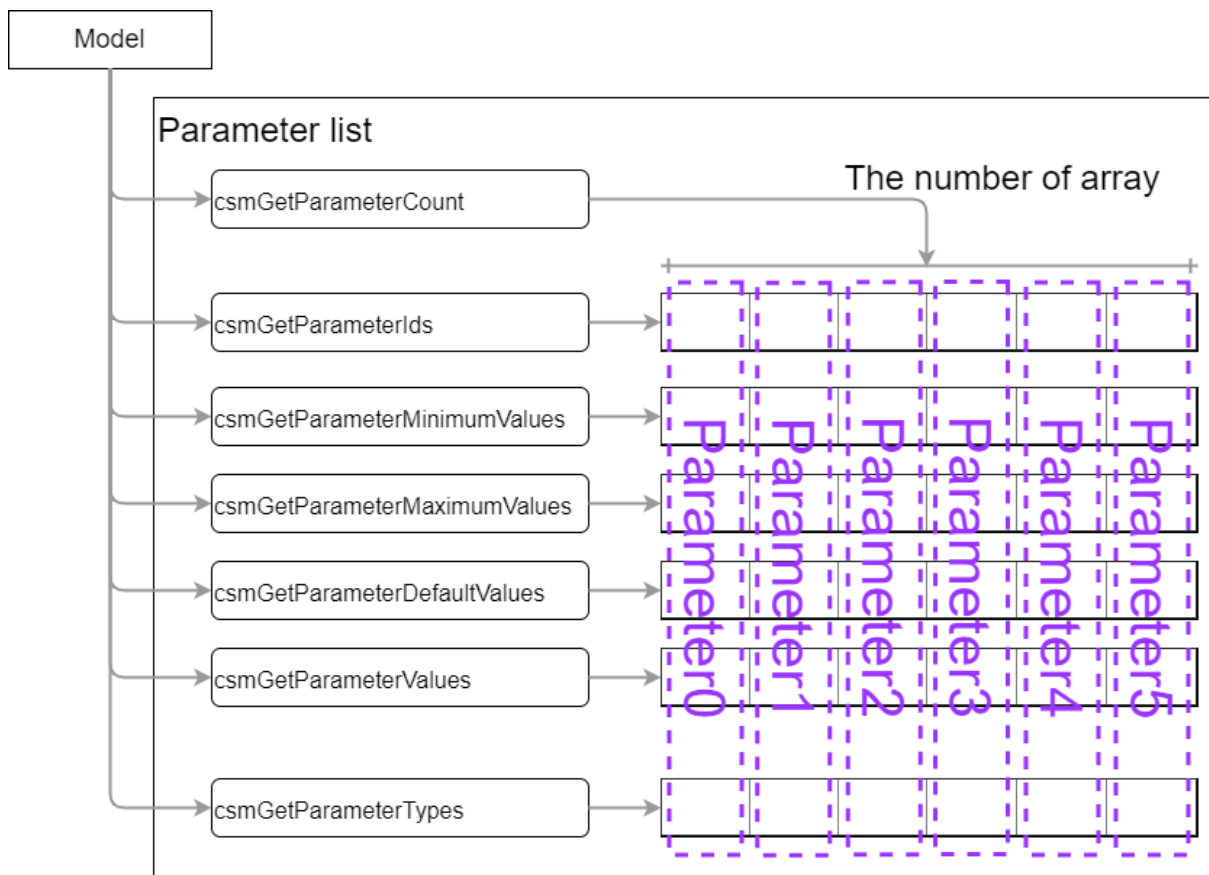
Manipulate the model

▪ Acquiring each element of the parameter

It is necessary to understand each element of the parameter to manipulate the model.

The following 5 things are the elements.

- ID
- Present value
- Maximum value
- Minimum value
- Initial value



Access to the elements of each parameter

```

snippet:
parameterCount = csmGetParameterCount(model);
parameterIds = csmGetParameterIds(model);
parameterValues = csmGetParameterValues(model);
parameterMaximumValues = csmGetParameterMaximumValues(model);
parameterMinimumValues = csmGetParameterMinimumValues(model);
parameterDefaultValues = csmGetParameterDefaultValues(model);
targetnum = -1;

for( i = 0; i < parameterCount ;++i)
{
    if( strcmp("ParamMouthOpenY",parameterIds[i]) == 0 )
    {
        targetnum = i;
        break;
    }
}
//In case that the desired ID could n't be found ID
if(targetnum == -1 )
{
    return;
}

// The minimum value, maximum value, initial value of "ParamMouthOpenY" parameter of the model is exported.
// min:0.0 max:1.0 default:0.0
printf("min:%3.1f max:%3.1f default:%3.1f", parameterMinimumValues[targetnum]
, parameterMaximumValues[targetnum]
, parameterDefaultValues[targetnum] );

```

Although movement manipulation is not directly involved, it is also possible to get the types set for the parameters of Blend Shapes etc.

Getting types set for each parameter

```

snip:
/** Parameter types. */
enum
{
    /** Normal Parameter. */
    csmParameterType_Normal = 0,

    /** Parameter for blend shape. */
    csmParameterType_BlendShape = 1
};

/** Parameter type. */
typedef int csmParameterType;

```

```
parameterCount = csmGetParameterCount(model);
parameterIds = csmGetParameterIds(model);
parameterTypes = csmGetParameterTypes(model);

for( i = 0; i < parameterCount ;++i)
{
    switch( parameterTypes[i] )
    {
        case csmParameterType_Normal :
            printf( "%s : Normal\n", parameterIds[i] );
            break;

        case csmParameterType_BlendShape :
            printf( "%s : BlendShape\n", parameterIds[i] );
            break;
    }
}
```

Link to the used API

[csmGetParameterCount](#)

[csmGetParameterIds](#)

[csmGetParameterValues](#)

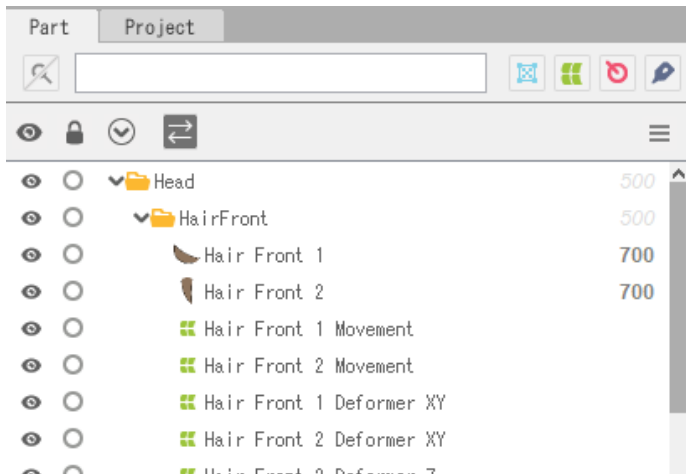
[csmGetParameterMaximumValues](#)

[csmGetParameterMinimumValues](#)

[csmGetParameterDefaultValues](#)

[csmGetParameterTypes](#)

Getting the parent parts of parts



Parts are made of tree structure.

This tree structure is created by the operation of the editor.

csmModel even holds the information of the structure that is generated from moc3.

The results of csmGetPartParentPartIndices shows the parent of parts by index in array.

When the parent number indicates the -1, it indicates that the parent is the Root.

snippet:

```
// Getting the ID list of parts.
const char** partIds = csmGetPartIds(model);

// Getting the parent of the index list of parts.
const int* parentPartIndices = csmGetPartParentPartIndices(model);

// If partParentIndex = -1, parent is empty.
// If partParentIndex >= 0, the value of parentPartIndices is the Index of the parent.
for (int i = 0; i < partCount; ++i)
{
    if(partParentIndex[i] == -1)
    {
        printf("partParentIndex[%d]:%s does not have a parent part.", i, partIds[i]);
    }
    else
    {
        printf("partParentIndex[%d]:Parent part of %s is %s.", i, partIds[i], partIds[parentPartIndices[i]]);
    }
}
}
```

Opacity operations to the parent part also applies to the opacity of the child.

Link to the used API

[csmGetPartParentPartIndices](#)

▪ Operating parameters

In the operation to the Cubism model, operation of the parameter is reflected by acquiring the address of the array of parameters and writing the value.

It is clamped from the minimum value to the maximum value of the parameter when `csmUpdateModel ()` is called.

If the repeat setting is made for the parameter, it will not be clamped.

```
snippet:
//
parameterIds = csmGetParameterIds(model);
parameterValues = csmGetParameterValues(model);
parameterDefaultValues = csmGetParameterDefaultValues(model);

// Scan array position corresponding to target ID
targetIndex = -1;

for( i = 0; i < parameterCount ;++i)
{
    if( strcmp("ParamMouthOpenY",parameterIds[i]) == 0 )
    {
        targetIndex = i;
        break;
    }
}
//In case that the desired ID could n't be found ID
if(targetIndex == -1 )
{
    return;
}

//Multiply the difference from reference value by the specified magnification ratio from the parameter.
parameterValues[targetIndex] =
    ( value - parameterDefaultValues[targetIndex] ) * multipleValues[targetIndex] +
    parameterDefaultValues[targetIndex];
```

[Link to the used API](#)

[csmGetParameterValues](#)

[csmGetParameterDefaultValues](#)

▪ Operating parts opacity.

Operation of parts opacity can be done by the same way as operation of a parameter.
It is reflected by acquiring the address of the array and writing the value to that memory.

It is clamped in the range of 0.0 to 1.0 by the processing of csmUpdateModel.

```
snippet:
// Manipulate opacity
partOpacities = csmGetPartOpacities(model);

// Find parameter index.
targetIndex = -1;

for( i = 0; i < parameterCount ;++i)
{
    if( strcmp("ParamMouthOpenY",parameterIds[i]) == 0 )
    {
        targetIndex = i;
        break;
    }
}
//In case that the desired ID could n't be found ID
if(targetIndex == -1 )
{
    return;
}

partOpacities[targetIndex] = value;
}
```

[Link to the used API](#)

[csmGetPartOpacities](#)

▪ Applying the operation to the model.

After changing the opacity of a parameter or part, the operation must be reflected in the vertex and opacity of the actual Drawable.

This operation is done by `csmUpdateModel`.

`csmResetDrawableDynamicFlags ()` is needed to be called before `csmUpdateModel ()` in order to see which information necessary for drawing has been changed. For more details, refer to "Resetting DynamicFlag"

snippet:

```
// Update model.  
csmUpdateModel(Model);
```

The affected parts here are...

- `csmGetDrawableDynamicFlags`
- `csmGetDrawableVertexPositions`
- `csmGetDrawableDrawOrders`
- `csmGetDrawableRenderOrders`
- `csmGetDrawableOpacities`

Link to the used API

[csmUpdateModel](#)

[csmGetDrawableDynamicFlags](#)

[csmGetDrawableVertexPositions](#)

[csmGetDrawableDrawOrders](#)

[csmGetDrawableRenderOrders](#)

[csmGetDrawableOpacities](#)

• Reset of DynamicFlag

csmResetDrawableDynamicFlags executes writing the difference of the value between former one and current one to csmGetDrawableDynamicFlags

If this operation is skipped, only items of csmlsVisible will be updated by csmGetDrawableDynamicFlags.

csmGetDrawableDynamicFlags needs to be called right before csmUpdateModel which will be executed to rendering.

snippet:

```
// Reset dynamic drawable flags.  
csmResetDrawableDynamicFlags(Sample.Model);
```

Link to the used API

[csmResetDrawableDynamicFlags](#)

Rendering

• Necessary processes for rendering

For rendering, the following steps are necessary after the process for model.

- Updating Drawable vertices
- Updating opacity of Drawable
- Sorting drawing order
- Checking validity of Drawable if it is not valid rendering needs to be stopped.
- Mask processing
- Multiply color
- Screen color

Also, rendering in Cubism has elements such as composition of opacity of textures, additive synthesis, multiplicative synthesis, culling, and invert the clipping mask or not.

When implementing rendering of the Cubism model, it is necessary to reproduce them in the same way as Editor does.

• Specification of rendering

Confirmation of Element with ConstantFlags

The synthesis method for each Drawable, on / off of culling, invert the clipping mask or not can be obtained with `csmGetDrawableConstantFlags`.

For the meaning of the obtained Flag, please refer to the constants in `Live2DCubismCore.h`

```

snippet:
/** Bit masks for non-dynamic drawable flags. */
enum
{
    /** Additive blend mode mask. */
    csmBlendAdditive = 1 << 0,

    /** blend mode mask. */
    csmBlendMultiplicative = 1 << 1,

    /** Double-sidedness mask. */
    csmIsDoubleSided = 1 << 2

    /** Clipping mask inversion mode mask. */
    csmIsInvertedMask = 1 << 3
};

```

Either `csmBlendAdditive` or `csmBlendMultiplicative` will be applied.

Formula for color composition

When each color elements consists from 0.0 to 1.0 and $D=RGBA(Drgb, Da)$ is set as color data to render color data $S=RGBA(Srgb, Sa)$ already contained in the rendering target, render to calculate Output result $O = RGBA(Orgb, Oa)$ gets

Normal synthesis

$$Orgb = Drgb \times (1 - Sa) + Srgb$$

$$Oa = Da \times (1 - Sa) + Sa$$

Additive synthesis

$$Orgb = Drgb + Srgb$$

$$Oa = Da$$

Multiplicative synthesis

$$Orgb = Drgb \times (1 - Sa) + Srgb \times Drgb$$

$$Oa = Da$$

Note that Multiplicative, when rendering target is buffer with alpha rendering will be failed if Multiplicative,Additive are applied on transparent background.

Culling direction and DrawableIndices

In DrawableIndices obtained from Core, counter-clockwise rotation is recognized as a surface.

Adjust the culling control in accordance with the rendering API to use.

Specification of Clipping

Clipping needs to be done by multiplying alpha value after all masks were combined for the rendering source.

In synthesis of multiple masks, opacity of Drawable is fixed as 1. Also, Normal synthesis is always applied regardless of specification of the method of synthesis. The opacity of textures needs to be applied.

Culling is applied in the same way as ordinary rendering method.

When the inverted mask of masked drawable is enabled, inverts the synthesized alpha value. Please refer to "[Apply mask on rendering](#)" for more details.

▪ Confirmation of updated information

It may be helpful for acceleration of entire process that only items with changes such as vertex coordinates, opacity, rendering order of Drawable gets updated. Updated items can be obtained by `csmGetDrawableDynamicFlags`.

Checking DynamicFlag, updating vertex information and processing sort flag

```
snippet:
for ( d = 0; d < csmGetDrawableCount(model); d++)
{
    dynamicFlags = csmGetDrawableDynamicFlags(model);

    isVisible = (dynamicFlags[d] & csmlsVisible) == csmlsVisible;

    if ((dynamicFlags[d] & csmVertexPositionsDidChange) == csmVertexPositionsDidChange)
    {
        /* update vertexes */
    }

    // Check whether drawables need to be sorted.
    sort = sort ||
        ((dynamicFlags[d] & csmRenderOrderDidChange) == csmRenderOrderDidChange);
}

if (sort)
{
    /* render order need sort */
}
```

```
}
```

Following 6 are information obtained by csmGetDrawableDynamicFlags.

snippet:

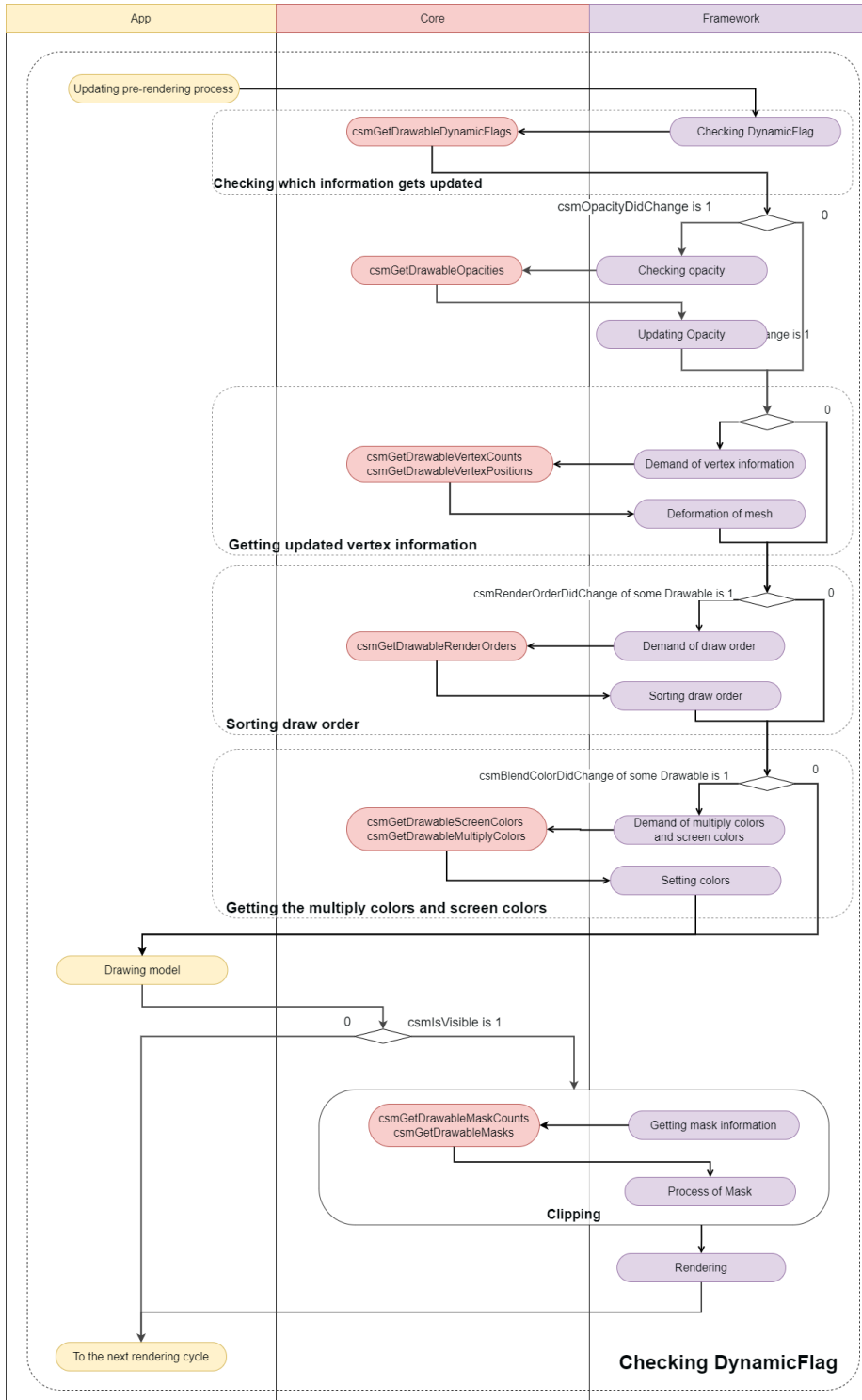
```
/** Bit masks for dynamic drawable flags. */
enum
{
    /** Flag set when visible. */
    csmlsVisible = 1 << 0,
    /** Flag set when visibility did change. */
    csmVisibilityDidChange = 1 << 1,
    /** Flag set when opacity did change. */
    csmOpacityDidChange = 1 << 2,
    /** Flag set when draw order did change. */
    csmDrawOrderDidChange = 1 << 3,
    /** Flag set when render order did change. */
    csmRenderOrderDidChange = 1 << 4,
    /** Flag set when vertex positions did change. */
    csmVertexPositionsDidChange = 1 << 5
};
```

Explanation about each flag

csmlsVisible	A bit is set when Drawable is displayed. Whether the parameter is outside the range of the key or calculation result of the opacity of Drawable is 0 the bit is put down.
csmVisibilityDidChange	A bit is raised when csmlsVisible changes from the previous state.
csmOpacityDidChange	A bit is raised when opacity of Drawable changed.
csmDrawOrderDidChange	A bit is raised when draw order of Drawable changed. Please note that it doesn't happen when the rendering order changed.
csmRenderOrderDidChange	A bit is raised when rendering order changes. Rendering order needs to be sorted.
csmVertexPositionsDidChange	A bit is raised when the VertexPositions changes.
csmBlendColorDidChange	A bit is raised when opacity of multiply color or screen

	color changed. Note that it is not possible to determine whether the multiply color or the screen color has been changed.
--	--

Flow chart of Flag Confirmation Process



Link to the used API

[csmGetDrawableDynamicFlags](#)

▪ Obtaining the updated vertex information

The updated vertex information is received and the information is copied to the renderer. Updating the vertice information and opacity read at initialization is only necessary.

Updating the vertice information and opacity.

```
snippet:
// Initialize locals.
dynamicFlags = csmGetDrawableDynamicFlags(renderer->model)
vertexPositions = csmGetDrawableVertexPositions(renderer->Model);
opacities = csmGetDrawableOpacities(renderer->Model);

for (d = 0; d < renderer->DrawableCount; ++d)
{
    // Update 'inexpensive' data without checking flags.
    renderer->drawables[d].Opacity = opacities[d];

    // Do expensive updates only if necessary.
    if ((dynamicFlags[d] & csmVertexPositionsDidChange) ==
csmVertexPositionsDidChange)
    {
        //Updating vertex information to graphics
        for( i = 0; i < renderer->drawables[d].vertexCount; ++i)
        {
            renderer->drawables[d].vertexPositons[i].x = vertexPositions[d][i].x;
            renderer->drawables[d].vertexPositons[i].y = vertexPositions[d][i].y;
        }
        UpdateGraphicsVertexPosition( renderer->drawables[d] );
    }
}
```

Link to the used API

[csmGetDrawableVertexPositions](#)

[csmGetDrawableDynamicFlags](#)

[csmGetDrawableOpacities](#)

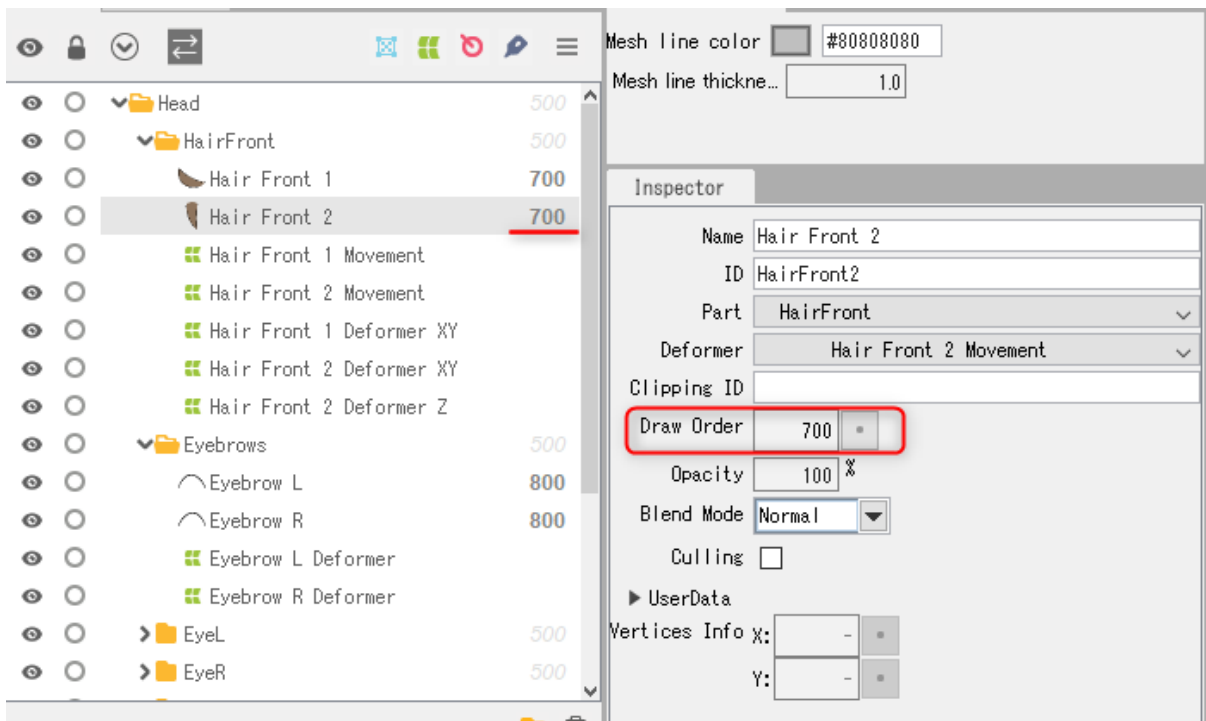
▪ Sorting drawing order of Drawable

DrawOrder changes by the change of parameter. As a result, if the RenderOrder changed, the calling order of the drawing needs to be changed.

▪ DrawOrder and RenderOrder

The drawing order (DrawOrder) and the rendering order (RenderOrder) seem to be similar but different.

The drawing order is the value to be referred to for determination of the order of drawing on the art mesh on the Editor.



The value output by `esmGetDrawableDrawOrders` is the value in Cubism Editor's inspector. Calculation of drawing order group is not related.

Rendering order shows the order of actual rendering of Drawable relating with the drawing order

To get the rendering order `esmGetDrawableRenderOrders ()`. needs to be called.

Process of initialization for sorting.

```
snippet:
// Initialize static fields.
for (d = 0, count = csmGetDrawableCount(model); d < count; ++d)
{
    sortableDrawable[d].DrawableIndex = d;
}
```

Evaluation function for sorting

```
snippet:
static int CompareSortableDrawables(const void *a, const void *b)
{
    const SortableDrawable* drawableA = (const SortableDrawable*)a;
    const SortableDrawable* drawableB = (const SortableDrawable*)b;

    return (drawableA->RenderOrder > drawableB->RenderOrder) -
        (drawableA->RenderOrder < drawableB->RenderOrder);
}
```

Sort

```
snippet:
renderOrders = csmGetDrawableRenderOrders(model);
count = csmGetDrawableCount(model);

// Fetch render orders.
for (d = 0; d < count; ++d)
{
    sortableDrawable[d].RenderOrder = renderOrders[sortableDrawable[d].DrawableIndex];
}

// Sort.
qsort(sortableDrawable, count, sizeof(SortableDrawable), CompareSortableDrawables);
```

Access with sorting order on rendering

```
snippet:
for (d = 0, count = csmGetDrawableCount(model); d < count; ++d)
{
    target = &drawable[sortableDrawable[d].DrawableIndex];
    drawing( target );
}
```

Link to the used API

[csmGetDrawableCount](#)

[csmGetDrawableDrawOrders](#)

[csmGetDrawableRenderOrders](#)

▪ Apply mask on rendering.

To find out which Drawable a Drawable is masked `csmGetDrawableMaskCounts` and `csmGetDrawableMasks` is used.

`csmGetDrawableMaskCounts[d]` can obtain the information that how many Drawable for masking d-th Drawable is masked with.

the number on array of i-th Drawable can be obtained `csmGetDrawableMasks[d][i]`.

If there are multiple maskable Drawables, only alpha of each Drawable is synthesized.

To synthesize for mask, Normal synthesize needs to be always applied even if Additive or Multiplicative are set as Blend mode of the Drawable.

Setting of culling needs to be set for synthesizing.

Even if a Drawable is used as a mask, sometime Drawable needs not to be displayed for needs for expression. Therefore value of the opacity on the Drawable is not used to synthesizing masks each other.

If the range of the alpha value is 0.0-1.0, by setting the alpha value of drawable for which inverted mask is enabled to "1.0 - synthesized alpha value", draw clipping with the mask inverted.

Processing Mask in Drawing process and access to mask Drawable

```

snippet:
/* All of called functions in the following snippet are tentative. */
int d;
int drawableCount = csmGetDrawableCount(model);
const int *maskCount = csmGetDrawableMaskCounts(model);
const int **masks = csmGetDrawableMasks(model);
const csmFlags *dynamicFlags = csmGetDrawableDynamicFlags(model);
const csmFlags *constantFlags = csmGetDrawableConstantFlags(model);

for (d = 0; d < drawableCount; ++d)
{
    /* When sorted rendering order has been stored by csmGetDrawableRenderOrder in
Sorters[d].RenderOrder. */
    target = Sorters[d].RenderOrder;
    if (maskCount[d] > 0)
    {
        /* Rendering when a mask exists. */
        /* Reset mask buffe */
        ResetMaskBuffer();

        /* Change rendering target to mask buffa. */
        RenderTarget(MASK);

        /* Do the common setting for rendering mask. */
        SetRenderingOpacity(1.0f); //Opacity needs to be fixed as 1.
        SetRenderingMode(RENDER_MODE_NORMAL); //the method of synthesis needs to be
fixed as Normal.
        for (i = 0; i < maskCount[target]; ++i)
        {
            int maskDrawableIndex = masks[target][i];
            /* If maskDrawableIndex gets -1, the Drawable is not exported since it is hidden for example.
* In this case, rendering mask needs to be skipped. */
            if (maskDrawableIndex == -1 )
            {
                continue;
            }

            /* If csmVertexPositionsDidChange of DynamicFlag of mask is not put up vertex information is not available.
* In this case rendering mask needs to be skipped by continue. */
            if ((dynamicFlags[maskDrawableIndex] & csmVertexPositionsDidChange) !=
csmVertexPositionsDidChange)
            {
                continue;
            }

            Drawable maskingDrawable = drawable[maskDrawableIndex];
            /* Setting for mask needs to be used for setting of Culling and texture. */
            SetCulling(maskingDrawable.culling);
            SetMainTexture(maskingDrawable.texture);

```

```
        /* Rendering */
        DrawElements();
    }
    /* Get rendering target to the normal buffer. */
    RenderTarget(MAIN);

    /* Specify each item of rendering of Drawable */
    Drawable targetDrawable = drawable[target];
    SetRenderingOpacity(targetDrawable.opacity);
    SetRenderingMode(targetDrawable.renderMode);
    SetCulling(targetDrawable.culling);
    SetMainTexture(targetDrawable.texture);

    bool isInvertedMask = (constantFlags[target] & csmlsInvertedMask) != csmlsInvertedMask;
    /* Specify items which will use (if shader is different it needs to be specified on this step) */
    /* Change the shader depending on inverting the mask or not */
    SetMaskTexture(MASK, isInvertedMask);

    /* Rendering */
    DrawElements();
}
else
{
    /*Rendering without mask*/
    /* Specify each item for rendering of Drawable. */
    Drawable targetDrawable = drawable[target];
    SetRenderingOpacity(targetDrawable.opacity);
    SetRenderingMode(targetDrawable.renderMode);
    SetCulling(targetDrawable.culling);
    SetMainTexture(targetDrawable.texture);

    /* Specify "not" use of mask. */
    SetMaskTexture(NULL);

    /* rendering */
    DrawElements();
}
}
```

Link to the used API

[csmGetDrawableMaskCounts](#)

[csmGetDrawableMasks](#)

▪ Apply the multiply color and screen color to the shader

Use `csmGetDrawableMultiplyColors` and `csmGetDrawableScreenColors` for the multiply color and the screen color of a Drawable.

The multiply color set for the `dth` Drawable can be obtained by `csmGetDrawableMultiplyColors[d]`, and the screen color by `csmGetDrawableScreenColors[d]`.

Each color set for the `dth` Drawable can be obtained with the type `csmVector4`, where `X` contains the value of R, `Y` the value of G, `Z` the value of B, and `W` the value of A.

If multiply color is not set, the initial value is set to (1.0f, 1.0f, 1.0f, 1.0f).

This initial value is set as a value that does not affect the original color, as each RGB value is multiplied when applying the multiply color.

If screen color is not set, the initial value is set to (0.0f, 0.0f, 0.0f, 1.0f).

This initial value is set as a value that does not affect the original color, as each RGB value is added when applying the screen color.

Gets the multiply color and screen color, and apply them to the shader

```
snippet:
/* All of called functions in the following snippet are tentative. */

/* multiply color */
const csmVector4* multiplyColor = csmGetDrawableMultiplyColors(model);

/* screen color */
const csmVector4* screenColor = csmGetDrawableScreenColors(model);

/* Apply the multiply color and screen color to the shader */
CubismShader_OpenGLES2::GetInstance()->SetupShaderProgram(
    this, drawTextureId, vertexCount, vertexArray,
    uvArray, opacity, colorBlendMode, modelColorRGBA,
    multiplyColor[ddrawableIndex], // multiply color
    screenColor[ddrawableIndex], // screen color
    isPremultipliedAlpha, mpvMatrix, invertedMask
);
```

Link to the used API

[csmGetDrawableMultiplyColors](#)

[csmGetDrawableScreenColors](#)

▪ Getting the parameter keys

Use `csmGetParameterKeyCounts` and `csmGetParameterKeyValues` to obtain the keys set for the parameters.

The number of keys set for the `d`th Parameter can be obtained by `csmGetParameterKeyCounts[d]`.

The position of the `i`th key set for the `d`th Parameter can be obtained by `csmGetParameterKeyValues[d][i]`.

Gets the keys set for the parameters and the number of them

```
snippet:
/* All of called functions in the following snippet are tentative. */

/* Number of keys set for the parameters */
const int* keyCounts = csmGetParameterKeyCounts(_model);

/* Gets the position of each key set for the parameters */
const float** keyValues = csmGetParameterKeyValues(_model);

const csmChar** parameterIds = csmGetParameterIds(_model);
const csmInt32 parameterCount = csmGetParameterCount(_model);

for (csmInt32 i = 0; i < parameterCount; ++i)
{
    printf("%s : %d\n", parameterIds[i], keyCounts[i]);
    for (csmInt32 j = 0; j < keyCounts[i]; ++j)
    {
        printf("3.1%f\n", keyValues[i][j]);
    }
}
```

Link to the used API

[csmGetParameterKeyCounts](#)

[csmGetParameterKeyValues](#)

Individual APIs

Naming rule for the APIs.

▪ SOA structure

If there is API called `csmGet[XXXX]Count`, arrays obtained by API group of `csmGet[XXXX][YYYY]`s are stored in the same order.

For more details, please refer to ["Loading and placement Drawable"](#).

▪ InPlace

`CsmReviveMocInPlace` with `InPlace` and `csmInitializeModelInPlace` indicates that they are APIs manipulate specified memory space.

For more details , please refer to ["Release csmMoc or csmModel"](#).

csmGetVersion

Return version information of The Core.

Argument

None

Return value

• csmVersion(unsigned int)

Notation of the versions consists of three parts: MAJOR, MINOR, and PATCH.
The followings are the rules for management of each part.

MAJOR version (1byte)

This is incremented when backward compatibility with model data (.moc3 file) has been lost by, for instance, by major version up of Cubism Editor.

MINOR version (1byte)

This is incremented when new functions are added with backward compatibility kept.

PATCH number (2byte)

This is incremented when defect failure has been fixed.

If the MAJOR version or MINOR version is changed, the PATCH number is reset to 0.

```
0x  00  00  0000
    Major Minor Patch
```

Version consists of 4 bytes. Also, the newer version of the Core always indicates the bigger number by treating it as unsigned integer.

Item with description

[How to obtain version information of the Core.](#)

Available version

3.0.00 or higher

csmGetLatestMocVersion

Returns the new file version that Core can process.

Argument

None

Return value

• csmMocVersion(unsigned int)

Item with description

[File version of moc3](#)

Available version

3.3.01 or higher

csmGetMocVersion

Returns the moc3 file version from the loaded memory of .moc3 file.

Argument

•void* address

The address of the head of the data array which includes .moc3.

•const unsigned int size

.moc3 is the length of the data array which includes .moc3.

Return value

•csmMocVersion(unsigned int)

```
/** moc3 file format version. */
enum
{
    /** unknown */
    csmMocVersion_Unknown = 0,
    /** moc3 file version 3.0.00 - 3.2.07 */
    csmMocVersion_30 = 1,
    /** moc3 file version 3.3.00 - 3.3.03 */
    csmMocVersion_33 = 2,
    /** moc3 file version 4.0.00 - 4.1.05 */
    csmMocVersion_40 = 3,
    /** moc3 file version 4.2.00 - */
    csmMocVersion_42 = 4
};

/** moc3 version identifier. */
typedef unsigned int csmMocVersion;
```

If the load is not a moc3 file returns the csmMocVersion_Unknown.

Please be careful that there is a possibility that the value more than the value defined in the Live2DCubismCore.h will be got by the version-up of Cubism Editor.

To find the file version or that you can use, please be compared with the results of csmGetLatestMocVersion.

Item with description

[File version of moc3](#)

Available version

3.3.01 or higher

csmGetLogFunction

Returns a pointer to the saved log function.

Argument

None

Return value

• csmLogFunction (address)

Types of log functions

```
snippet:  
/** Log handler.  
 *  
 * @param message Null-terminated string message to log.  
 */  
typedef void (*csmLogFunction)(const char* message);
```

Item with description

[Output log of the Core.](#)

Available version

3.0.00 or higher

csmSetLogFunction

Specify function to output logs

Argument

• csmLogFunction handler

```
snippet:  
/** Log handler.  
 *  
 * @param message Null-terminated string message to log.  
 */  
typedef void (*csmLogFunction)(const char* message);
```

Return value

None

Item with description

[Output log of the Core.](#)

Available version

3.0.00 or higher

csmReviveMocInPlace

Play the csmMoc structure in a memory that .moc3 file is loaded.

The address passed by address must satisfy the default alignment.

Description of the alignment size in the include file

```
snippet:
  /** Alignment constraints. */
  enum
  {
    /** Necessary alignment for moc3 (in bytes). */
    csmAlignofMoc = 64,
  };
```

The played csmMoc structure needs be released after all csmModels generated from csmMoc has been released.

For more details, please refer to ["How to load a Moc3 file and to expand up to the csmModel object"](#)

Argument

• void* address

The address of the head of the data array which includes .moc3
Alignment is necessary.

• const unsigned int size

.moc3 is the length of the data array which includes .moc3

Return value

• csmMoc*

Address to csmMoc structure

It gets NULL when there is a problem.

Item with description

[How to load a Moc3 file and to expand up to the csmModel object](#)

Available version

3.0.00 or higher

csmGetSizeofModel

It returns the size of the Model structure generated from the Moc structure.
This is used for securing memory.

Argument

• const csmMoc* moc
Address to Moc structure

Return value

• unsigned int
Size of Model structure

Item with description

[How to load a Moc3 file and to expand up to the csmModel object](#)

Available version

3.0.00 or higher

csmInitializeModelInPlace

It initializes the Model structure by the Moc structure.

Prepare the aligned memory.

Description of the alignment size in the include file

```
snippet:  
/** Alignment constraints. */  
enum  
{  
/** Necessary alignment for models (in bytes). */  
csmAlignofModel = 16  
};
```

Argument

• const csmMoc* moc
Address to Moc structure

• void* address
Address of allocated memory

• const unsigned int size
Size of allocated memory

Return value

• csmModel*

Item with description

[How to load a Moc3 file and to expand up to the csmModel object](#)

Available version

3.0.00 or higher

csmUpdateModel

It reflects the operation of parameters and parts on vertex information and so on.

Argument

• csmModel* model
Address to model structure

Return value

None

Item with description

[Applying the operation to the model](#)

Available version

3.0.00 or higher

csmReadCanvasInfo

It returns the canvas size, center point and unit size of the model.

Argument

• const csmModel* model

Address to model structure

• csmVector2* outSizeInPixels

Address to csmVector 2 for storing model canvas size

• csmVector2* outOriginInPixels

Address to csmVector 2 to store the center point of the model canvas

• float* outPixelsPerUnit

Unit size of model

Return value

None

Item with description

[Get rendering size of model](#)

Available version

3.0.00 or higher

csmGetParameterCount

It returns the number of parameters owned by the model.

Argument

· const csmModel* model
Address to model structure

Return value

· int
Number of parameters to hold

Item with description

[Acquiring each element of the parameter](#)

Available version

3.0.00 or higher

csmGetParameterIds

It returns the array address which stores the ID of the parameter of the model.

Argument

· const csmModel* model
Address to model structure

Return value

· const char**
Address to the array where string address is stored

Item with description

[Acquiring each element of the parameter](#)

Available version

3.0.00 or higher

csmGetParameterTypes

It returns the array address containing the ID of the parameter of the model.

Argument

·const csmModel* model
Address to model structure

Return value

·const csmParameterType*
Address to the array where parameter types are stored

```
/** Parameter types. */  
enum  
{  
    /** Normal Parameter. */  
    csmParameterType_Normal = 0,  
  
    /** Parameter for blend shape. */  
    csmParameterType_BlendShape = 1  
};  
  
/** Parameter type. */  
typedef int csmParameterType;
```

Item with description

[Acquiring each element of the parameter](#)

Available version

4.2.02 or higher

csmGetParameterMinimumValues

It returns an address to an array which stores only the minimum value of the parameter.

Argument

· const csmModel* model
Address to model structure

Return value

· const float*
Address to the array containing the minimum value

Item with description

[Acquiring each element of the parameter](#)

Available version

3.0.00 or higher

csmGetParameterMaximumValues

It returns an address to an array which stores only the maximum value of the parameter.

Argument

· const csmModel* model
Address to model structure

Return value

· const float*
Address to the array containing the maximum value

Item with description

[Acquiring each element of the parameter](#)

Available version

3.0.00 or higher

csmGetParameterDefaultValues

It returns an address to an array which stores only the default values of parameters.

Argument

· const csmModel* model
Address to model structure

Return value

· const float*
Address to the array containing the default value

Item with description

[Acquiring each element of the parameter](#)
[Operating parameters](#)

Available version

3.0.00 or higher

csmGetParameterValues

It returns an address to an array of just the current values of the parameters.

Manipulate the model by writing to this array.

Argument

· csmModel* model

Address to model structure

Return value

· const float*

Address to the array where the current value is stored.

Item with description

[Acquiring each element of the parameter](#)

[Operating parameters](#)

Available version

3.0.00 or higher

csmGetParameterKeyCounts

Address to the array storing the numbers of keys set for the parameters

Argument

· const csmModel* model
Address to model structure

Return value

· const int*
Address to the array storing the numbers of keys set for the parameters

Item with description

Getting the parameter keys

Available version

4.1.00 or higher

csmGetParameterKeyValues

Returns the address to the jagged array storing the positions of keys set for the parameters.

Argument

· const csmModel* model
Address to model structure

Return value

· const float**
Address to the jagged array storing the positions of keys set for the parameters

Item with description

Getting the parameter keys

Available version

4.1.00 or higher

csmGetPartCount

It returns the number of parts the model.

<http://docs.live2d.com/cubism-editor-manual/parts/>

Argument

• const csmModel* model
Address to model structure

Return value

• int
Number of parts

Item with description

None

Available version

3.0.00 or higher

csmGetPartIds

It returns the address to the array which stores the part ID of the model.

Argument

· const csmModel* model
Address to model structure

Return value

· const char**
Address to the array where string address is stored

Item with description

None

Available version

3.0.00 or higher

csmGetPartOpacities

It returns the address to the array which stores the current value of the opacity of the part of the model.

Argument

• csmModel* model
Address to model structure

Return value

• float*
Address of part opacity array

Item with description

[Operate parts opacity](#)

Available version

3.0.00 or higher

csmGetPartParentPartIndices

It returns the the parent of the parts by index in array.
If the parent of the part is Root, -1 will be stored

Argument

· csmModel* model
Address to model structure

Return value

· const int*
Address of the array stored the index to the parent of the parts

Item with description

[Gets the parent parts of parts](#)

Available version

3.3.00 or higher

csmGetDrawableCount

It returns the number of Drawables the model.

Argument

• const csmModel* model
Address to model structure

Return value

• int
Number of Drawables the model has

Item with description

[Loading and placement Drawable](#)
[Sorting drawing order of Drawable](#)

Available version

3.0.00 or higher

csmGetDrawableIds

Returns the address to the array which stores the ID of the model possessed by the model.

Argument

· const csmModel* model
Address to model structure

Return value

· const char**
Address to the array where string address is stored

Item with description

[Loading and placement Drawable](#)

Available version

3.0.00 or higher

csmGetDrawableConstantFlags

It returns the address to the array which stores the static flags of the Drawable possessed by the model.

The flags described here contain the following four elements
flags regarding blend of rendering

- Add rendering
- Multiply rendering

flag for culling of Drawable

- Double-sided rendering

Flag of the mask of Drawable **(Added since 4.0.0)**

- Inverted mask

Argument

- const csmModel* model
Address to model structure

Return value

- const csmFlags*
Address for array of a flag

```
snippet:  
/** Bitfield. */  
typedef unsigned char csmFlags;
```

Item with description

[Loading and placement Drawable](#)

Available version

3.0.00 or higher

csmGetDrawableDynamicFlags

It returns the address to the array which stores the flags updated when drawable owned by the model gets rendered.

The flags updated on rendering contain the following six elements.

- Visibility of rendering
- Change of visibility of rendering
- Change of opacity
- Change of rendering order
- Replacement of rendering order
- Vertex information update

Argument

- const csmModel* model
Address to model structure

Return value

- const csmFlags*
Address for the array of flag

```
snippet:  
/** Bitfield. */  
typedef unsigned char csmFlags;
```

Item with description

- [Loading and placement Drawable](#)
- [Applying the operation to the model](#)
- [Confirmation of updated information](#)
- [Obtaining the updated vertex information](#)

Available version

3.0.00 or higher

csmGetDrawableTextureIndices

It returns the address of the array which stores the texture number referred to by the drawable owned by the model.

The texture number means the number given to the texture atlas to which the art mesh belongs.

Argument

• const csmModel* model
Address to model structure

Return value

• const int*
Address of the array containing the texture number

Item with description

[Loading and placement Drawable](#)

Available version

3.0.00 or higher

csmGetDrawableDrawOrders

It returns the address for the array which stores the drawing order of the drawing possessed by the model.

Based on the current parameter value, this value stores the interpolated calculation result. The influence of the rendering order group is ignored.

Argument

• const csmModel* model
Address to model structure

Return value

• const int*
Address for the array containing the rendering order

Item with description

[Loading and placement Drawable](#)
[Applying the operation to the model](#)
[Sorting drawing order of Drawable](#)

Available version

3.0.00 or higher

csmGetDrawableRenderOrders

It returns the address for the array which stores the rendering order of the drawing possessed by the model.

It rendered in the same order as displayed in Cubism Editor.

Argument

• const csmModel* model
Address to model structure

Return value

• const int*
Address for the array containing the rendering order

Item with description

[Loading and placement Drawable](#)
[Applying the operation to the model](#)
[Sorting drawing order of Drawable](#)

Available version

3.0.00 or higher

csmGetDrawableOpacities

It returns the address for the array which stores the opacity value of the Drawable possessed by the model.

The value will be between 0.0 and 1.0.

Argument

• const csmModel* model
Address to model structure

Return value

• const float*
Address for array containing opacity

Item with description

[Loading and placement Drawable](#)
[Applying the operation to the model](#)
[Confirmation of updated information](#)
[Obtaining the updated vertex information](#)

Available version

3.0.00 or higher

csmGetDrawableMaskCounts

It returns an address to an array which stores the number of Drawable owned by the model.

Argument

• const csmModel* model
Address to model structure

Return value

• const int*
Address for the array containing the number of masks

Item with description

[Loading and placement Drawable](#)
[Apply mask on rendering](#)

Available version

3.0.00 or higher

csmGetDrawableMasks

It returns the address of the jagged array which stores the Drawable number of the masks of Drawable owned by the model.

Handle it carefully since 0 in csmGetDrawableMaskCounts contains address information used in other masks in Drawable.

Argument

• const csmModel* model
Address to model structure

Return value

• const int**
Address for the array of addresses containing mask reference number

Item with description

[Loading and placement Drawable](#)

[Apply mask on rendering](#)

Available version

3.0.00 or higher

csmGetDrawableVertexCounts

It returns the address for the array which stores the number of vertices of the drawable possessed by the model.

Argument

• const csmModel* model
Address to model structure

Return value

• const int*
Address for an array containing the number of vertices of Drawable

Item with description

[Loading and placement Drawable](#)
[Apply mask on rendering](#)

Available version

3.0.00 or higher

csmGetDrawableVertexPositions

It returns the address to the jagged array which stores the vertex of the drawable possessed by the model.

Argument

·const csmModel* model
Address to model structure

Return value

·const csmVector2**
Address to jagged array to vertex information

```
snippet:  
/** 2 component vector. */  
typedef struct  
{  
    /** First component. */  
    float X;  
  
    /** Second component. */  
    float Y;  
}  
csmVector2;
```

Item with description

[Loading and placement Drawable](#)
[Applying the operation to the model](#)
[Confirmation of updated information](#)
[Obtaining the updated vertex information](#)

Available version

3.0.00 or higher

csmGetDrawableVertexUvs

It returns the address to the jagged array which stores the UV information of Drawable possessed by the model.

Since it corresponds to each vertex, the number of vertex get obtained with csmGetDrawableVertexCounts.

Argument

• const csmModel* model
Address to model structure

Return value

• const csmVector2**
Address to jagged array to vertex information

Item with description

[Loading and placement Drawable](#)

Available version

3.0.00 or higher

csmGetDrawableIndexCounts

It returns the address of an array which stores the size of the corresponding number array of polygons against the vertex of the model possessed by the model.

Since it becomes an array describing which corner of a triangle corresponds each vertex, the value stored in this array always gets 0 or a multiple of 3.

Note that the size of Indices becomes zero at the end of skinning.

Argument

• const csmModel* model
Address to model structure

Return value

• const int*
address of an array that stores the size of the corresponding number array of polygons.

Item with description

[Loading and placement Drawable](#)

Available version

3.0.00 or higher

csmGetDrawableIndices

It returns the address to the jagged array which corresponds Drawable number of the vertexes of Drawable owned by the model.

Each drawable has stored number which is independent.

Handle it carefully since 0 in csmGetDrawableIndexCounts contains address information used in other Drawable.

Argument

• const csmModel* model
Address to model structure

Return value

• const unsigned short**
Address to the corresponding number of jagged array.

Item with description

[Loading and placement Drawable](#)

Available version

3.0.00 or higher

csmResetDrawableDynamicFlags

In order to refresh the information obtained by `csmGetDrawableDynamicFlags` at the next `csmUpdateModel`, all flags needs to be taken down.

The timing for the call is right after the drawing process is over.

Argument

• `csmModel*` model

Address to model structure

Return value

None

Item with description

[Reset of DynamicFlag](#)

Available version

3.0.00 or higher

csmGetDrawableMultiplyColors

Returns the address to the array storing the multiply colors of ArtMeshes.

Argument

• `csmModel*` model
Address to model structure

Return value

• `const csmVector4*`
Address to the array storing the RGBA values of the multiply color of ArtMeshes
X corresponds to R, Y to G, and Z to B (Value of W currently unused)

```
snippet:  
/** 4 component vector. */  
typedef struct  
{  
    /** 1st component. */  
    float X;  
  
    /** 2nd component. */  
    float Y;  
  
    /** 3rd component. */  
    float Z;  
  
    /** 4th component. */  
    float W;  
} csmVector4;
```

Item with description

Getting the multiply colors and screen colors

Available version

4.2.00 or higher

csmGetDrawableScreenColors

Returns the address to the array storing the screen colors of ArtMeshes.

Argument

• csmModel* model
Address to model structure

Return value

• const csmVector4*
Address to the array storing the RGBA values of the screen color of ArtMeshes
X corresponds to R, Y to G, and Z to B (Value of W currently unused)

```
snippet:  
/** 4 component vector. */  
typedef struct  
{  
    /** 1st component. */  
    float X;  
  
    /** 2nd component. */  
    float Y;  
  
    /** 3rd component. */  
    float Z;  
  
    /** 4th component. */  
    float W;  
} csmVector4;
```

Item with description

Getting the multiply colors and screen colors

Available version

4.2.00 or higher

csmGetDrawableParentPartIndices

It returns the the parent of Drawable by index in array.
If the parent of Drawable is Root, -1 will be stored.

Argument

• const csmModel* model
Address to model structure

Return value

• const int*
address of an array that stores the size of the corresponding number array of polygons.

Item with description

[Gets the parent parts of Drawable](#)

Available version

4.2.02 or higher

csmHasMocConsistency

Checks the consistency of the .moc3 file

Prepare the aligned memory.

Argument

·const csmMoc* moc

Address to Moc structure

·void* address

Address of allocated memory

Alignment is necessary.

·const unsigned int size

Size of allocated memory

Return value

·int

.moc3 consistency.

'1' if the loaded .moc3 is valid, otherwise '0'.

Item with description

[How to load a Moc3 file and to expand up to the csmModel object](#)

Available version

4.2.03 or higher